

September 9, 2024

Mitsui Fudosan Co., Ltd.

Japan Sports Council (incorporated administrative agency)

Meiji Jingu (religious corporation)

ITOCHU Corporation

**Further Measures to Preserve Trees and New Measures to Create Greenery  
in the Jingu Gaien District Urban Redevelopment Project**

Tokyo, Japan, September 9, 2024 – The developers of the Jingu Gaien District Urban Redevelopment Project (hereinafter, “the project”) today released a revised greening plan to reduce the number of trees to be removed and to create new greenery in response to a request from the Tokyo Metropolitan Government received on September 12, 2023 (“Conservation of Trees in the Redevelopment Project of the Jingu Gaien District [Request]”). The revised plan, which aims to conserve as many trees as possible in the entire area of the project, is the result of facility design adaptations, etc. and a detailed verification process based on data from the survey of existing trees conducted in 2023, as well as extensive discussions among the project developers. The plan has been submitted to the Tokyo Metropolitan Government and its content is outlined in this release.

## Key Points of This Release

### 1. Increase in the number of trees after redevelopment

Under the original plan in the project, the number of trees 3.0 meters or taller was expected to increase from 1,904 to 1,998, an increase of 94 trees. However, under the revised plan, **the number of trees after redevelopment will rise to 2,304, an increase of 400 trees.** (The increase of 400 trees is the total of: a reduction in the number of trees to be removed (124); an increase in the number of trees to be planted (261); an increase in new trees to be planted under the original plan (94); minus dead or ailing trees (79).).

#### (1) Reduction in the number of trees to be removed due to facility design adaptations, etc.

The number of trees to be removed will be **reduced from 743 to 619, a decline of 124 trees,** through facility design adaptations in original plans for the new rugby facility and the area in front of Meiji Memorial Picture Gallery, and through revisions to the plan from removal to preservation or transplantation based on the individual tree research conducted in 2023. The number of trees to be removed also includes dead or ailing trees\*.

#### (2) Increase in the number of newly planted trees

By enhancing the greening plan, the number of new trees to be planted will be further increased **from 837 in the original plan to 1,098, an increase of 261 trees.**

### 2. Wider setback for the new baseball stadium

Regarding the distance from the sidewalk curb of the rows of ginkgo trees to the underground framework of the new baseball stadium (hereinafter, “the setback width”), based on the results of research of the root system of the rows of ginkgo trees conducted in 2023 and 2024, which focused on the number, circumference, and length of the roots, the setback width has been extended from approximately 8.0 meters in the original plan to **approximately 18.3 meters, an increase of 10.3 meters.** This will provide a better growing environment to preserve the ginkgo trees.

Before reaching our decision on this policy, we reviewed the research methods and analyzed the research results based on the opinions of several tree doctors (see Supplementary Materials) and also obtained a second opinion from a third party.

\*1 “Dead or ailing trees” refers to withered or decaying trees that need to be removed for safety management reasons.

### **1. Increase in the number of trees after redevelopment**

Under the revised plan, **the number of trees after development will increase from 1,904 to 2,304, an increase of 400 trees** compared to the original plan. This reflects a reduction in the number of trees to be removed and an increase in the number of new trees to be planted following a review of facility designs and other factors. The increase of 400 trees is the total of: a reduction in the number of trees to be removed (124); an increase in the number of trees to be planted (261); an increase in new trees to be planted under the original plan (94); minus dead or ailing trees (79).

	Before redevelopment	After redevelopment
Original plan	1,904	1,998
Revised plan	1,904	2,304

+ 400

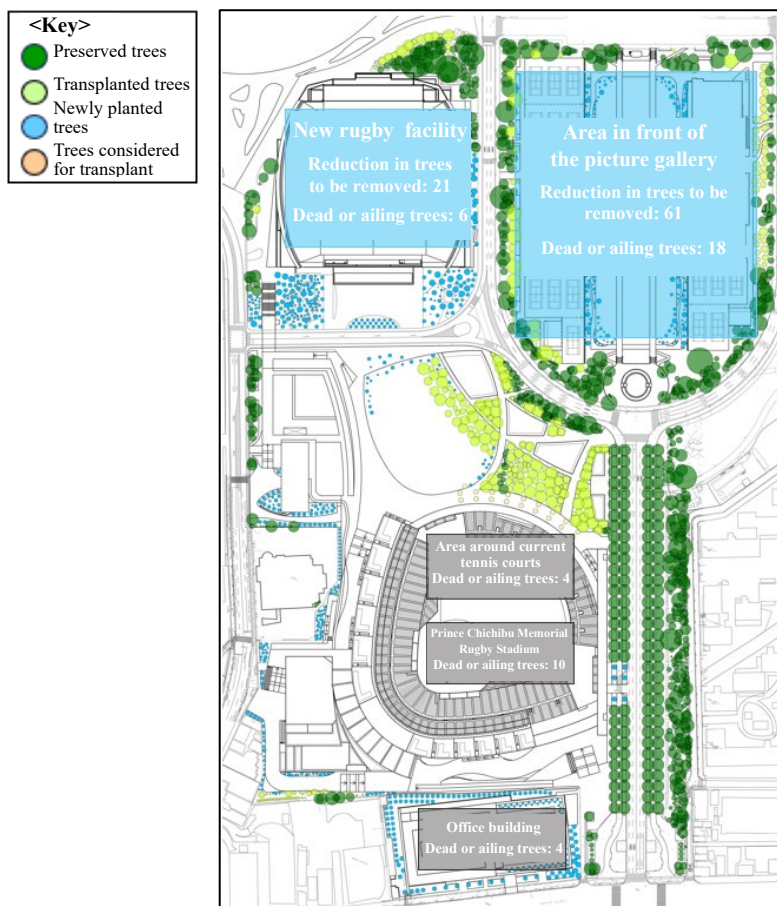
### (1) Reduction in the number of trees to be removed due to facility design adaptations, etc.

The number of existing trees to be removed from the new rugby facility site and from the area in front of the Meiji Memorial Picture Gallery was reduced by 66 trees through facility design adaptations. In addition, based on the results of the individual tree research conducted in 2023 (hereinafter, “the 2023 tree research”), 16 trees will be transplanted instead of removed due to a recovery in tree vitality and other factors. Also, including a decline of 42 in the number of dead or ailing trees planned for removal, the total number of trees to be removed will decrease from 743 in the original plan to 619, a decline of 124.

Table 1: Breakdown of the 124 trees that have been excluded from the scope of removal due to plan revisions

	Totals	Breakdown		
		New rugby facility	Area in front of picture gallery	Others
Reclassified from removal to preservation (facility design adaptations)	66	9	57	0
Reclassified from removal to transplant (recovery in tree vitality, etc.)	16	12	4	0
Reduction in number of trees to be removed due to plan revisions (1)	82	21	61	0
Reduction in number of dead or ailing trees planned for removal (2)	42	6	18	18
Total reduction in number of trees to be removed in the project (1)+(2)	124	27	79	18

Figure 1: Area distribution of the 124 trees that have been excluded from the scope of removal due to plan revisions



\*2 Specific details on the location of transplanted and newly planted trees are yet to be determined and may be subject to change.

## (2) Increase in the number of newly planted trees

Due to facility design adaptations and revisions to tree transplant areas, the number of new trees to be planted will rise from 837 in the original plan to 1,098, an increase of 261 trees.

Table 2: Revisions to the number of newly planted trees

	Totals	Breakdown		
		New rugby facility	Area in front of picture gallery	Others
Original plan	837	81	398	358
Revised plan	1,098	212	528	358
<b>Increase</b>	<b>+261</b>	<b>+131</b>	<b>+130</b>	<b>0</b>

### ■Dealing with dead or ailing trees, etc.

“Dead or ailing trees” refers to withered or decaying trees that need to be removed for safety management reasons. Many of the trees in Jingu Gaen have weakened with age. To ensure the safety of visitors, daily measures are being taken to deal with fallen trees and broken branches. Over the past 15 years, approximately 300 dead or ailing trees have been cut down, which have been renewed with replanting.

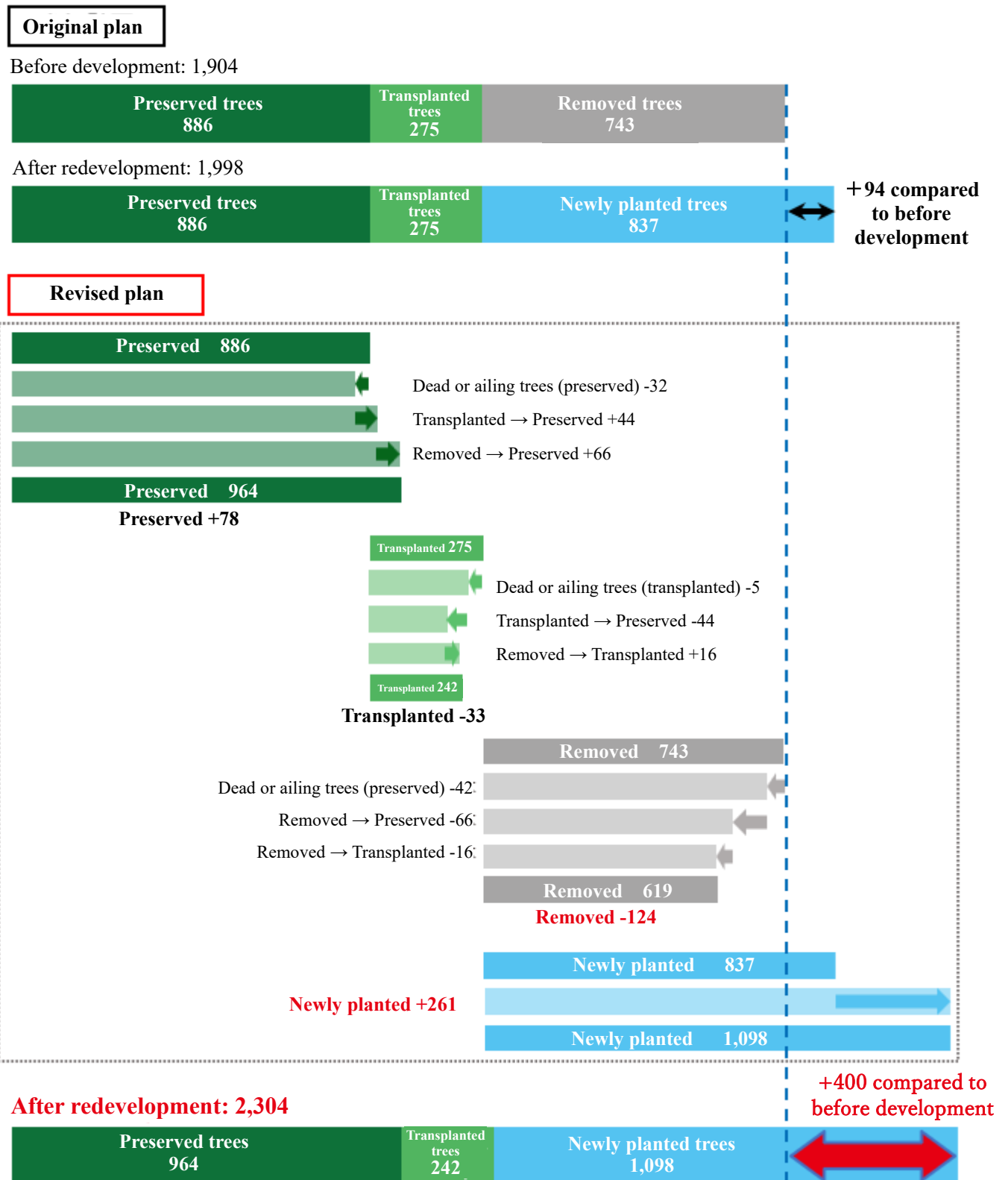
The current number of trees in the project is based on the individual tree research conducted from 2018 to 2019 (hereinafter, “the 2019 tree research”). However, in the roughly four years since the 2019 tree research, there have been 79 dead or ailing trees (42 removed, 32 preserved, 5 transplanted in the original plan).

We anticipate that a certain number of dead or ailing trees, especially those with low vitality, will continue to occur in future. If any trees that are planned to be preserved or transplanted under the project are later lost because they are dead or ailing, we plan to replant the same number of trees to create an abundant green environment.

**As a result of the above revisions, the number of trees in this project will be changed from the original plan as follows.**

The increase of 400 trees is the total of: the increase in new trees to be planted under the original plan (94); a reduction in the number of trees to be removed (124); an increase in the number of trees to be planted (261); minus dead or ailing trees (79).

Figure 2: Comparison of number of trees between original plan and revised plan



\*3 The number of trees described in this release and the Supplementary Materials only covers trees 3.0 meters or taller.

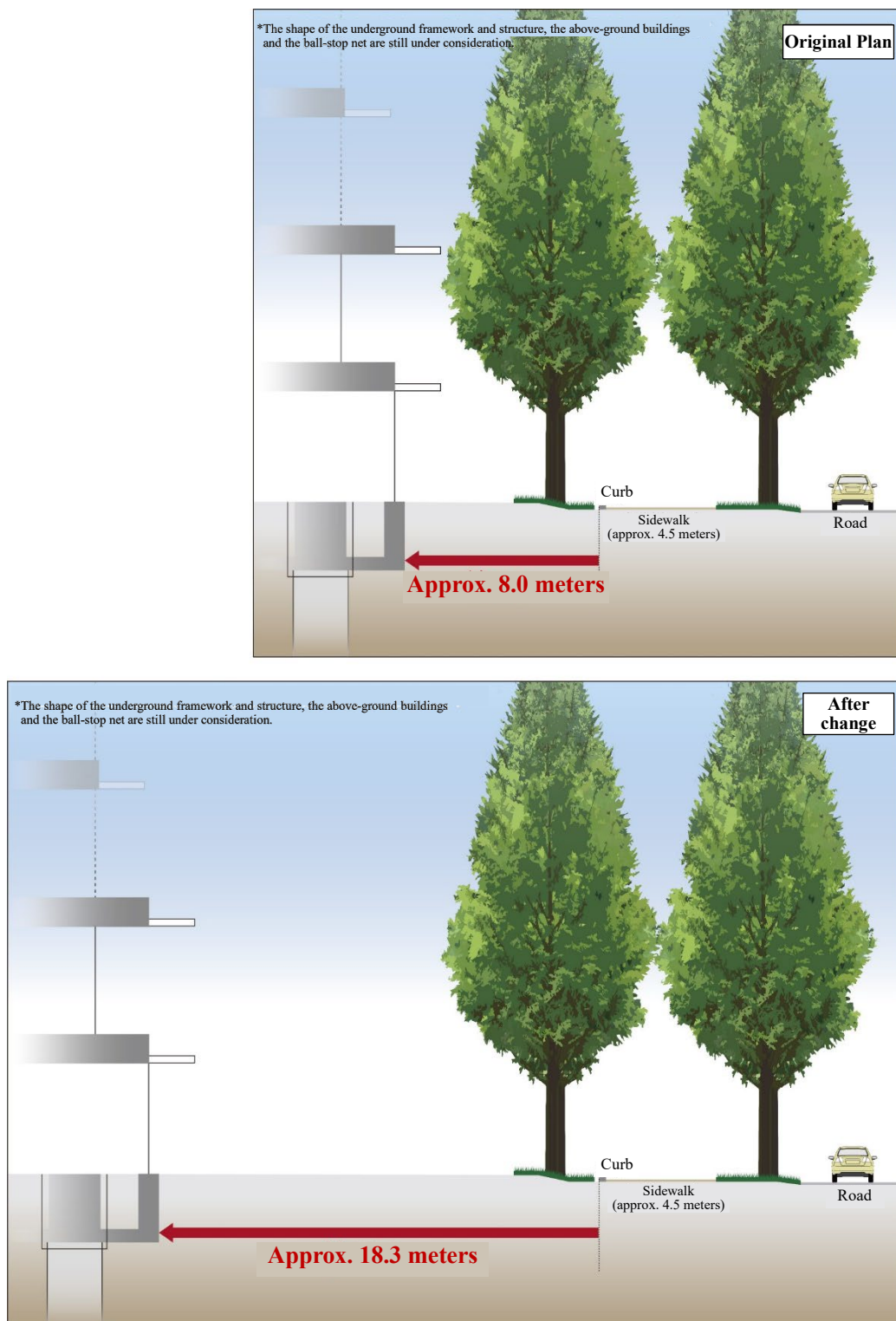
\*4 Transplanted trees include 19 trees under consideration for transplantation.

## 2. Wider setback for the new baseball stadium

### **(1) Results of root system research and wider setback for the new baseball stadium**

Based on the results of root system research conducted on the west side of the Four Rows of Ginkgo Trees in January 2023 and in January 2024, a total of five large roots (generally over 30 millimeters in diameter) were found at a distance of approximately 10.5 meters to the west of the sidewalk curb of the rows of ginkgo trees. No large roots were confirmed at a distance greater than roughly 17.0 meters. The root system protection area has therefore been set at approximately 17.0 meters. Also, to secure an additional 1.3 meters of space during construction and to provide additional space for root system growth, the setback width for the new baseball stadium building has been extended from roughly 8.0 meters in the original plan to approximately 18.3 meters (Figure 3).

Figure 3: Simplified diagram of the root system protection area and the setback width to the underground framework for the new baseball stadium



\*5 In the environmental impact assessment report the criteria for making judgements on the trees has been set as follows. “If root system research results in fewer than four large roots (diameter of at least 30 millimeters) in the surveyed section (1.0 meter x 1.0 meter), the roots may be cut, and if the research finds four or more roots, girdling shall be carried out on the roots. In cases where a tree doctor has judged that there are multiple roots that have an influence on the growth of a tree, then efforts will be made to preserve said tree, including adjustments to facility design, based on the opinion of the tree doctor.”

As noted above, increasing the setback width to approximately 18.3 meters will expand the pedestrian area and increase open space along the rows of ginkgo trees. This will preserve the Four Rows of Ginkgo Trees and create an area where more people can appreciate them, while also passing on a beautiful, open view of the Meiji Memorial Picture Gallery to future generations.

The root system research was conducted by IBIDEN Greentec Co., Ltd., which reviewed the research methods and analyzed the results based on the opinions of several tree doctors. We also obtained a second opinion<sup>\*6</sup> from a third party before reaching our decision on this policy.

\*6 For the results of the root system research and details of the second opinion, please refer to “Further Measures to Preserve Trees and New Measures to Create Greenery in the Jingu Gaien District Urban Redevelopment Project (Supplementary Materials)” mentioned below.

## **(2) Measures to remediate the vitality of ginkgo trees**

Various measures have been implemented since April 2024 to improve the growing environment of the ginkgo trees. For more details about these measures, please refer to the release dated July 26, 2024.

URL : [https://www.jingugaienmachidukuri.jp/pdf/en-jingugaienmachidukuri\\_news\\_2024072601.pdf](https://www.jingugaienmachidukuri.jp/pdf/en-jingugaienmachidukuri_news_2024072601.pdf)

For a more detailed explanation about the contents of this release, please refer to “Further Measures to Preserve Trees and New Measures to Create Greenery in the Jingu Gaien District Urban Redevelopment Project (Supplementary Materials),” which was published on the same date as this release.

URL : [https://www.jingugaienmachidukuri.jp/pdf/en-jingugaienmachidukuri\\_news\\_2024090902.pdf](https://www.jingugaienmachidukuri.jp/pdf/en-jingugaienmachidukuri_news_2024090902.pdf)

## **3. Other**

Due to requests we have received from Minato Ward and others, we are considering holding a briefing session for residents. Details will be announced as soon as they are finalized.

For inquiries regarding this release, please use the contact details below.

You can also submit questions about this project via the Q&A page on the project website using the URL below. Responses to questions are posted on the website within about three weeks to one month.

URL : <https://www.jingugaienmachidukuri.jp/en/faq/>

Please direct inquiries to:

Jingu Gaien District Redevelopment Project Planning Office (Japanese language only)

Telephone: 03-6695-0539

Reception hours: Monday to Friday (excluding national holidays) 9am to 6pm

Jingu Gaien District Urban Redevelopment Project website: <https://www.jingugaienmachidukuri.jp/en/>

Please refrain from contacting or interviewing the companies, organizations, or individuals mentioned in this release and supplementary materials.